



VENUE & GALLERY INFORMATION

INTRODUCTION



The Glue Factory is an independent arts venue and workspace situated in the Speirs Locks area of Glasgow. The building is a 20,000 Sq.Ft warehouse split over two levels.

25% of the building hosts private studios and the rest of the space is flexible event and exhibition space.

On the first floor we have a series of white walled galleries and the ground floor hosts a range of spaces - from decommissioned glue vats to industrial venue spaces.

The Glue Factory is a non-profit community interest company run by a voluntary board, a General Manger and freelance delivery staff. Financial surplus is re-invested into realising our core aims:

- Establish an independent, cross art form venue and workspace that is accessible to all
- Contribute and engage with the regeneration of Speirs Locks and north-west Glasgow
- Establish a sustainable and progressive social enterprise

Hire details:

- Exclusive dry hires of the whole venue.
- 24 Access Available.
- Over 1200m² of floor space.
- Full height load in access on ground floor.
- Street level access on both floors.
- 32 Amp/63 Amp power available.



GALLERIES

The Galleries comprise of over 400sqm of floor space and are split into 5 separate rooms:

Gallery 1:
8.6m x 21.4m (Area 184.6m²)

Gallery 2:
9.2m x 15.9m (Area 146.3m²)

Gallery 2a:
5.4m x 9.2 (Area 49.6m²)

Gallery 2b:
5.1m x 8.9m (Area 46.9m²)

Foyer
6.4m x 5m (Area 32m²)

Other info:

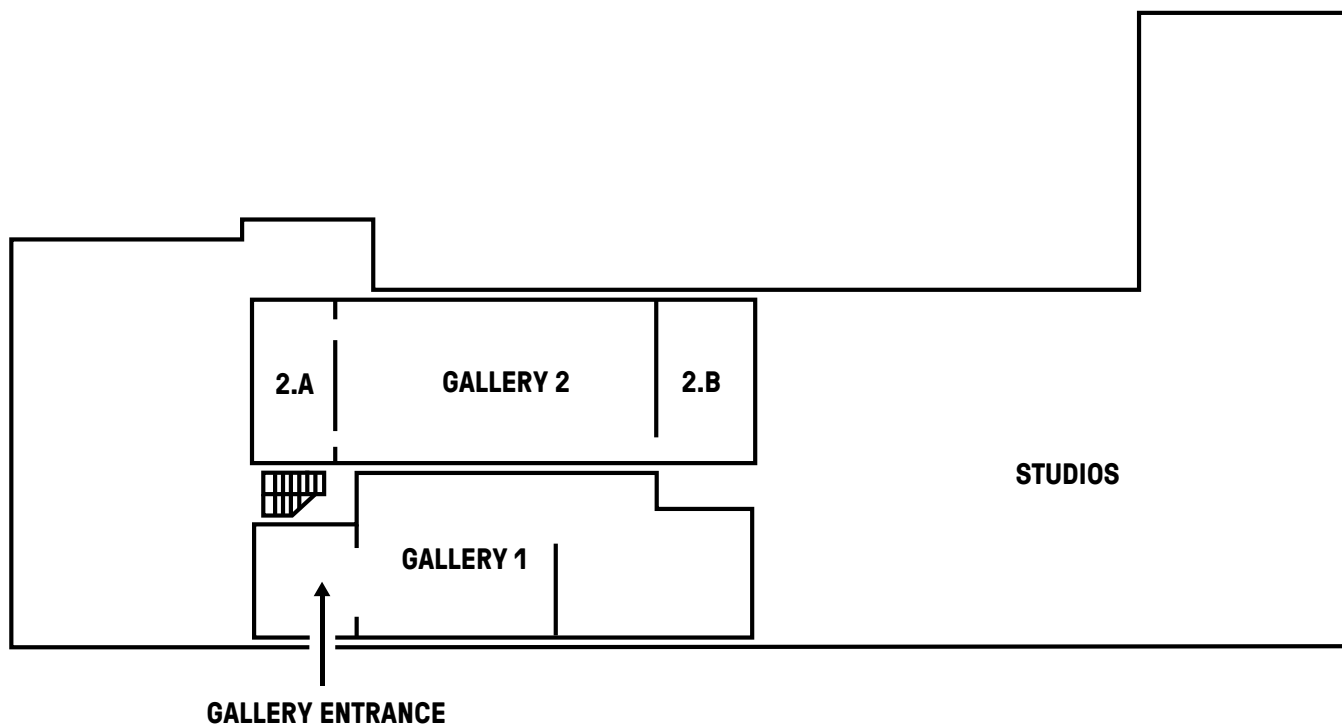
Ceiling Height 5m (Peaked) / Wall height 3m

Wooden floorboards and metal sheets

Natural Light throughout

13A sockets, with option to run with 16A/32A Single Phase from ground floor on request.

Ramp access via ground level fire escape for load-in of equipment, extra wide 1.5m door.





GALLERY 2





GROUND FLOOR

Bar:

9.1m x 21.3m (Area 193.8m²)

Venue 1

6.8m x 16.5m & 4.2m x 16.5m (Area 181.5m²)

Venue 2

12m x 4.4m (Area 52.8m²)

Cage Room

5m x 6.4m (Area 32m²)

White space

4m x 9.7m (Area 38.8m²)

Entrance space

6.4m x 10m (Area 64m²)

Other info:

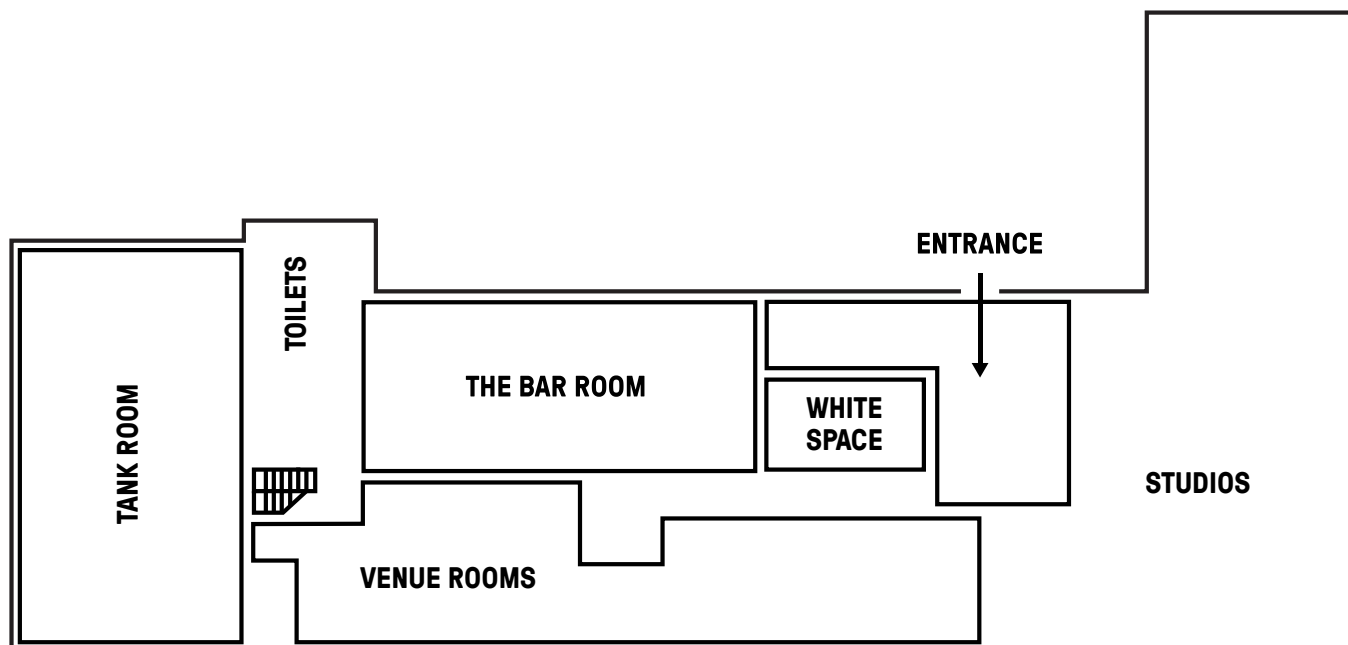
Ceiling Height 3.7m throughout

Concrete Floor throughout

Full Black out rooms

13A power throughout, with 16A/32A Single Phase and 32A/63A Three Phase available on request.

Access via roller shutter (2.4m wide x 2.8m high) entire ground floor on single level.



VENUE



BAR





TANK ROOM

Mezzanine:

4.3m x 8.9m (Area 38.2m²) 2.5m Ceiling

Upper level:

21.8m x 7.6m (Area 165.7m²) 7m to 9m Peaked ceiling

Ground floor level:

4.3m x 11.8m (Area 50.7m²) 6m to 8m Peaked ceiling

Other info:

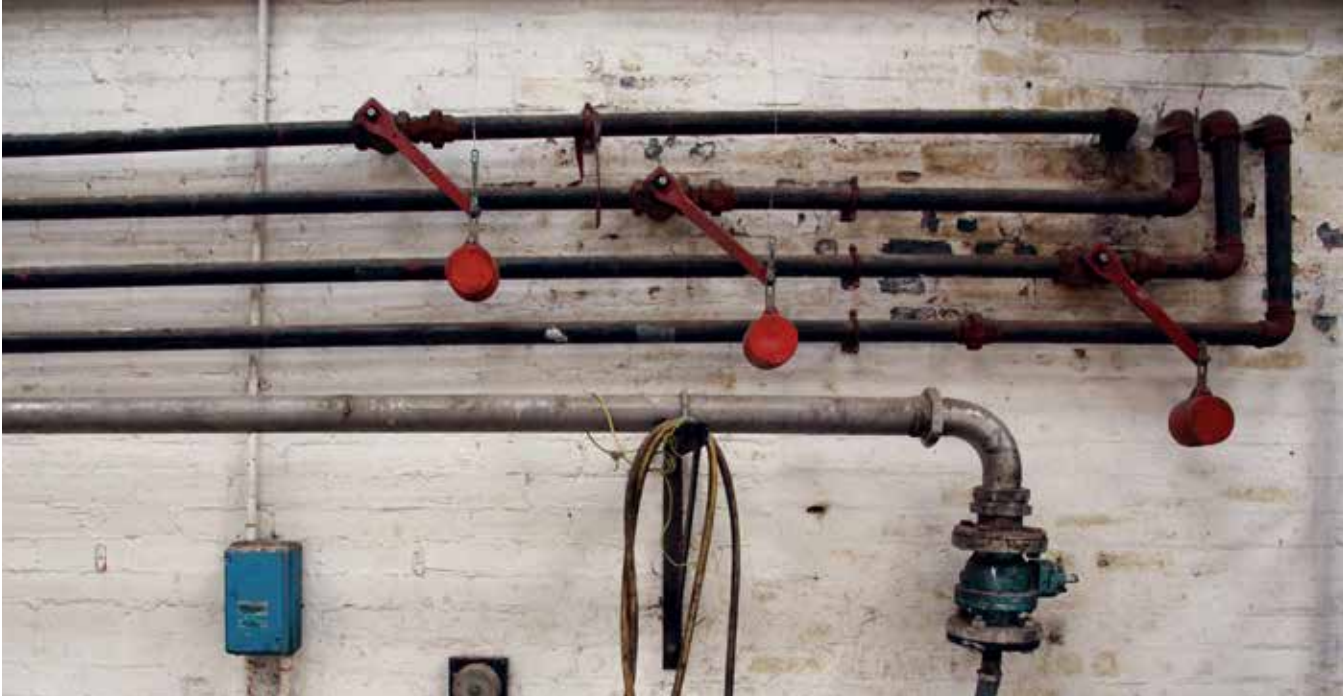
Floor surface - concrete on upper and ground floor level, metal sheeting on mezzanine

Good natural light via skylights

Power - 13A sockets and can run distribution from main board

Access - fire escape stair access to back of space and single level access through building via bar space

This space is our most industrial and unfinished and so suffers from water ingress during prolonged periods of rainfall







Tech:

Lighting:

1 x Classic Retrofit 10 PAR Spot RGB LED light bar
 6 x Showtec 56 Pro RGB LED PAR Can
 2 x Showtec Technoflash 448 LED stroboscope and blinders
 1 x 40cm Motorised Mirror Ball
 1 x 400w UV canon
 2 x Ayra WSM01 MKIII 900w DMX smoke machines

Large PA:

4 x Martin Audio Wavefront W8*
 4 x Martin Audio Wavefront WSX*
 8 x Crown Macro-Tech 2400/3600*

Small PA:

2 x EV ZLX-15P Monitors
 2 x EV ETX-35P Tops
 2 x EV ETX-18SP Subs

DJ Gear:

1 x Pioneer DJM-750 Mixer
 2 x Technics SL1210 mk2's + Cartridges

Power Distribution:

13A sockets throughout building
 16A/32A Single Phase
 32A Three Phase - 1 x RUB1409C
 63A Three Phase - 1 x RUB185H7

Ladders And Scaffold:

Various Ladders available throughout venue
 1 Person Aluminium Scaffold Tower (7m Max Working Height)

Please enquire for pricing and availability of any equipment.

Furniture:

Tables:

11 x large dark brown wooden folding tables
 9 x Grey folding tables (various Sizes)
 40 x Padded moulded plastic steel leg stacking school chair (green/yellow/blue/red legs)
 30 x misc chairs
 5 x back-to-back 4-seater pallet benches
 4 x 2-seater pallet benches

Sofas and Soft Chairs:

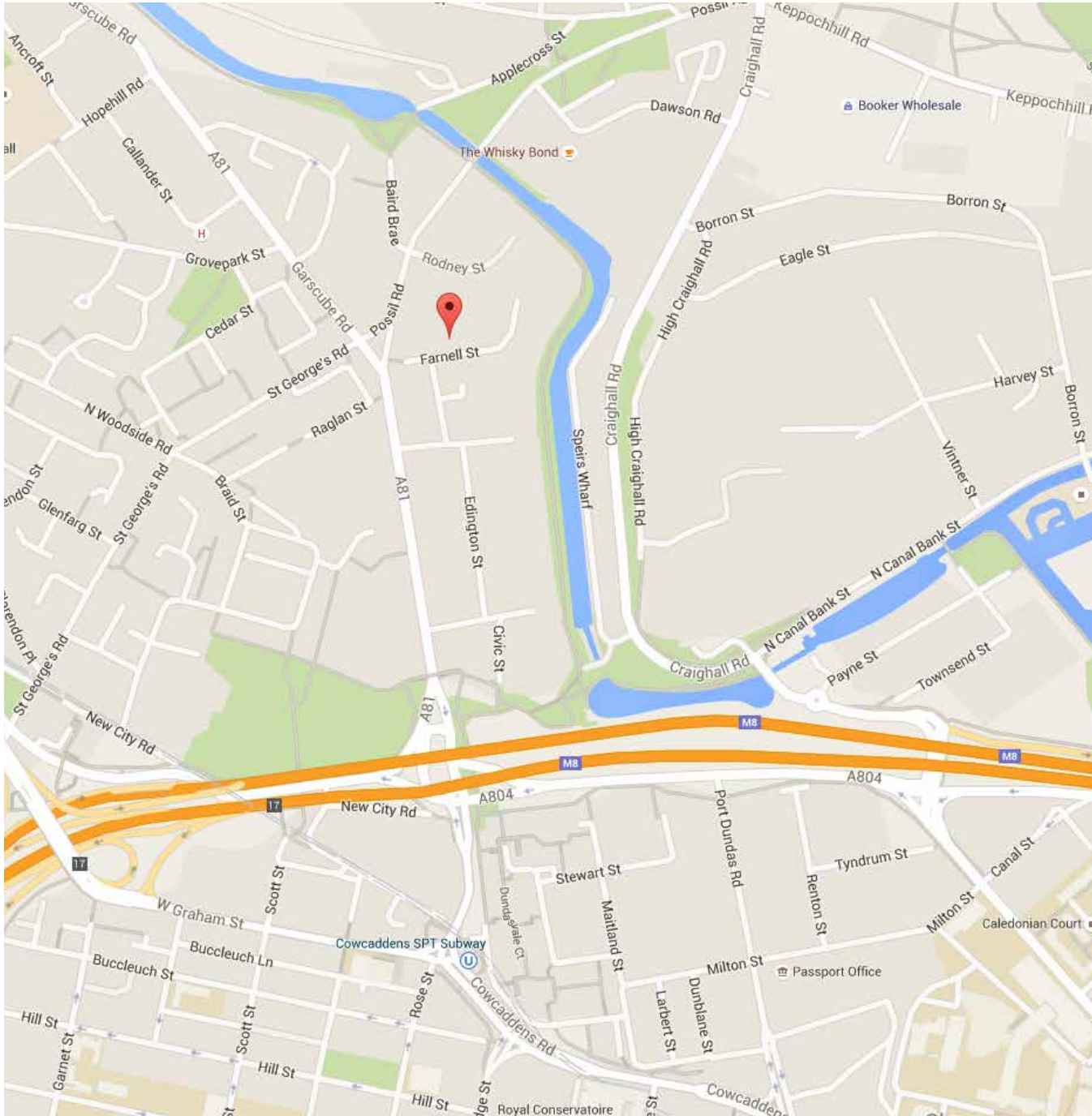
Various sofas and single seat armchairs (Worn)

Bars and Service Counters:

1 x Large black curved corner bar on castors
 1 x Small aluminium serving table on castors
 1 x Medium aluminium serving table on castors
 Fridges
 2 x Double glass door back bar bottle coolers
 1 x Double glass door back bar bottle cooler
 1 x Small glass door bar top fridge
 1 x Small glass door bar top Red Bull Fridge
 1 x Small white bar top fridge

Fencing:

11 x standard Herras fences (with connections and feet)
 9 x standard pedestrian barriers



Location:

Studios : 22 Farnell Street, G4 9SE
Venue : 15.b Burns Street, G4 9SE

Getting here:

Bus: On the 7, 68, 71a, 72, 75 and M3 bus route from Buchanan Bus station (Garscube Road Stop)

Subway: 10 Minute walk from Cowcaddens subway station & 11 Minute walk from St Georges cross subway station

Train: 18 Minute walk from Charing Cross Rail Station

Drive: 3 Minute from M8 Motorway- Junction 17



GET IN TOUCH:

INFO@THEGLUEFACTORY.ORG | 0141 237 4845 | WWW.THEGLUEFACTORY.ORG